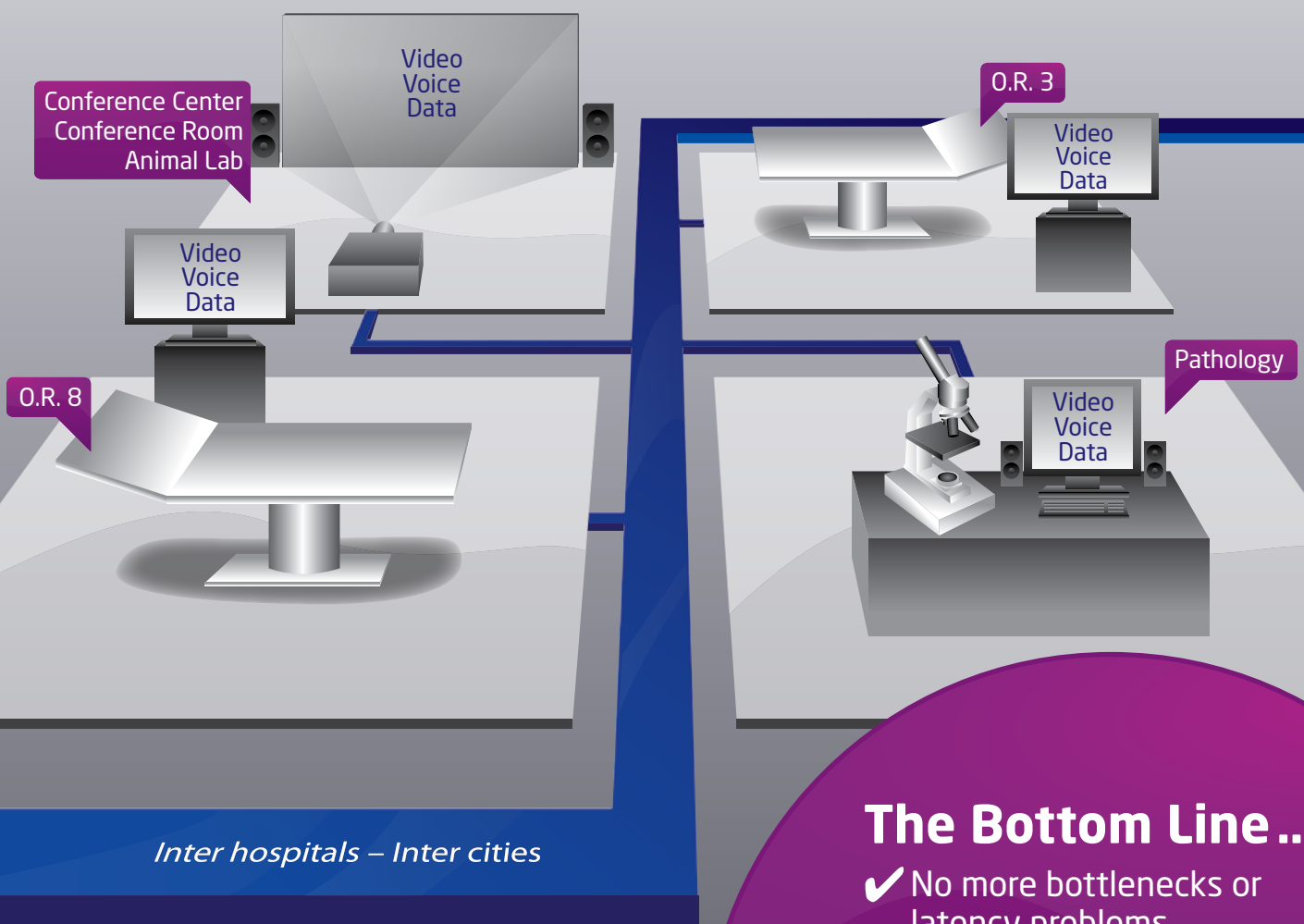


Clinical Video/Voice/Data in Real-Time, with Just One Box!

IPtec's Digital Network Application (DNA) makes it happen!



The Bottom Line ...

- ✓ No more bottlenecks or latency problems
- ✓ Better information access and information flow
- ✓ Better patient outcomes
- ✓ Lower costs

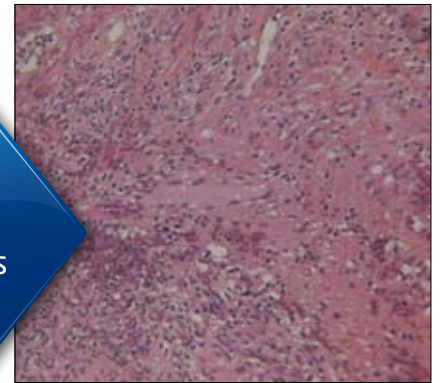
Major Applications



Teaming

OR ↔ Pathology lab

The surgeon in the OR and the pathologist in the path lab can jointly assess a patient's situation and discuss the best surgical approach.



CME

OR ↔ Conference

Unlimited video/voice/data can be piped into a medical conference anywhere in the world, in real time.



Telesurgery

OR ↔ OR

Interhospital and intercity surgeries can take advantage of expertise, data, and information available from anywhere in the world, in real time.



Training

OR ↔ Classroom

Medical students can learn from realistic scenarios, while patient privacy is fully protected.



Other Applications

- Surgery teams can monitor the status of the facilities they are scheduled to use, in order to make best use of their waiting time available resources and personnel, reducing waiting time.
- Coordinated (e.g., transplant) surgeries can be mutually monitored.

Features and Benefits

- ✓ Live, high-quality video with no lag.
- ✓ ONE small box does it!
- ✓ Plug-and-play portability facilitates data acquisition anywhere within an Ethernet LAN/WAN/MPLS network.
- ✓ Multiple channels of video input.
- ✓ Remote system management.
- ✓ Eliminates unsightly coaxial cables and the possibility of cable damage.
- ✓ Eliminates existing cable locations and video routers, or installing of cables at new locations.
- ✓ Plug in SFP Optical fiber interface

IPtec simplifies the current infrastructure point-to-point cable links with expensive video routers, by replacing these with a clean switched multiservice infrastructure.

Security

The Kernel-based Virtual Machine (KVM) security provides medical-record privacy within and between institutions as well as within and between cities and countries. Patient records are controlled by local physicians and can be viewed on remote monitors within the system without leaving the system.

Product information

Physical Dimensions

(H x W x D) (4 cm) 1.75" x (21 cm) 8.50" x (25 cm) 10.00"



Environmental Conditions

Operating Temperature: 0 to 50°C (32°F to 122°F)
Storage Temperature: -40 to 70°C (-40°F to 158°F)
Relative Humidity: 5% to 90% (Non Condensing)

Power Options

90-240 Volts AC (47-63Hz), 25W
12 Volts DC, 3 Amp

Optional External

AC Adapter

Input: 100-240 Volts AC (47-63Hz) 25W
Output: 12 volts (3 Amps)



About IPtec: *IPtec provides revolutionary access and network solutions for evolving communication technologies. Our integrated systems enable secure, real-time delivery of critical-mission services over IP-based networks in the medical, military, and enterprise domains.*

USA

IPtec, Inc.
5673 W. Las Positas Blvd. Suite 207
Pleasanton, CA 94588

Email: info-usa@iptec-inc.com
Phone: +1 877 430 3598
Direct: +1 925 251 0070
Fax: +1 925 251 0071

Europe

IPtec, Inc.
Voldumvej 19, 1st floor
Roedovre, 2610 Denmark

Email: info-europe@iptec-inc.com
Phone: +45 2216 0432

Asia

IPtec, Inc.
39, How Sun Drive
Singapore 535606

Email: info-asia@iptec-inc.com
Phone: +65 8611 4128
Fax: +65 6287 2683