

## SMMT Service Management & Monitoring

High Performance, low latency leader.

IPtec specializes in facilitating high performance, low latency services over IP networks.

IPtec provides reliable, high quality products for low latency video and telemetry services. These products enable customers to transport high quality video and telemetry signals over IP networks.

<http://www.iptec-inc.com>

**Seamless Control for A/V and Telemetry**

**24/7 Network & Call Monitoring**

**Secure SNMPv3 Communication**

**User Defined Graphical Network Display**

**Scalable up to 1,000 devices**

**Automatic Device Discovery**

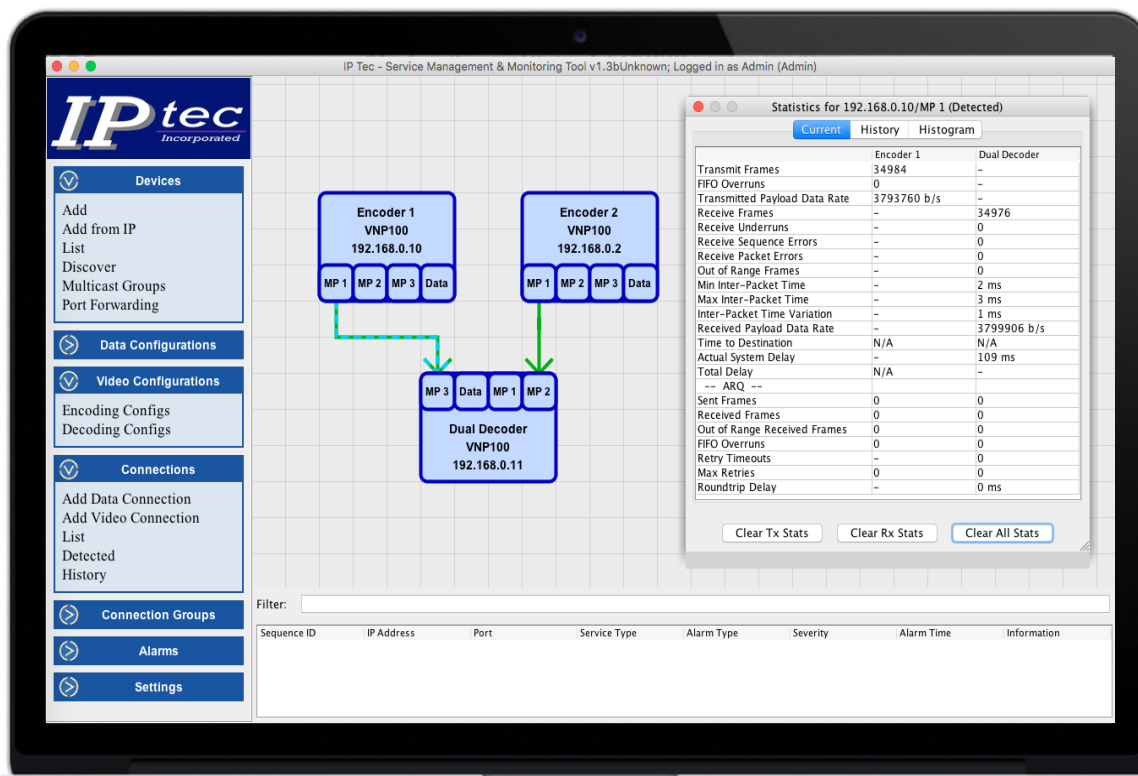
**Multiple User Accounts with Privileged Access**

**Drag & Drop Service Provisioning**

**Automation of Service**

**Reusable Service Configuration Profiles**

**Quick Launch Favorite Connections**



# SMMT Overview and Features

## Instant Alarm Reporting

Monitor all device and service alarms with color coding severity on the device and real time trap receiver.

## Mission Quality Statistics

Analyze and export call statistics history from service connection until disconnection providing total mission quality data..

## Real Time Service Statistics

Simultaneous viewing of Source and Destination port Statistics enables instant auto-refreshing verification of connection activity and data quality.

## Drag & Drop Service Provisioning

Select source port and drag to destination port to automatically create a service connection.

## Secure Connection

SNMPv3 and SNMPv2 Communication.

## Connection List

List of all provisioned service connections for instant service status.

## Configuration Profiles

Create and Save Telemetry and Video Configuration Profiles making a connection faster than ever before.

## Group Connections

Group multiple service connections for fast and easy connections.

## Autonomous System

Scheduled start & stop times for individual and grouped services.

## Device Discovery

Automatically discover devices on the network.

## Seamless Control

Add & Drop multiple multicast destination without disrupting service connections.

## Conflict Resolution

Detects active service ports and prevent or override conflicting connections.

## SMMT System Requirements

### HARDWARE

### MINIMUM REQUIREMENTS

CPU Dual Processor, 2 GHz  
Memory 2 GB RAM  
Hard Drive 2 GB

### SOFTWARE

### MINIMUM REQUIREMENTS

OS Any OS capable of Java 8 RE

